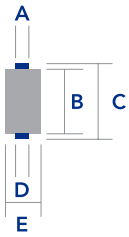


# PRODUCT GUIDE

## Standard Weights and Packaging

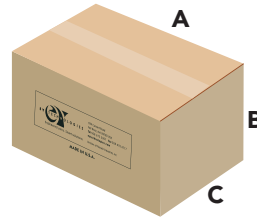
### BRAID TUBE

Properties	Small	Medium	Large	XLarge
<b>Weight/Tube</b>	.30 lbs	.50 lbs	.70 lbs	.90 lbs
<b>A (OD)</b>	0.875" (22 mm)	0.875" (22 mm)	0.875" (22 mm)	0.875" (22 mm)
<b>B</b>	5" (127 mm)	5" (127 mm)	5" (127 mm)	6.875" (175 mm)
<b>C</b>	5.5" (140 mm)	5.5" (140 mm)	5.5" (140 mm)	7.25" (184 mm)
<b>D (ID)</b>	0.625" (16 mm)	0.625" (16 mm)	0.625" (16 mm)	0.625" (16 mm)
<b>E</b>	1.75" (44 mm)	2.08" (53 mm)	2.35" (59 mm)	2.10" (53 mm)
<b>No. of Tube/Boxes</b>	132	96	72	48
<b>Weight Box (28 Mil 0.7mm)</b>	~32.5 lbs (14.8 kg)	~45 lbs (20.5 kg)	~42 lbs (19 kg)	38.5 lbs (17.5 kg)
<b>Weight Box (40 Mil 1mm)</b>	~41 lbs (18.6 kg)	~47 lbs (21.4 kg)	~45 lbs (20.5 kg)	



#### Braid Tube

Standard Weights & Packaging  
(Refer to the above chart)



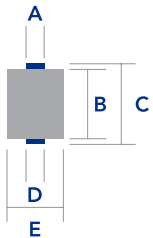
#### Box Dimensions

- A 20.8" (528 mm)
- B 11.13" (283 mm)
- C 9.75" (248 mm)

#### XL Tube Box Dimensions

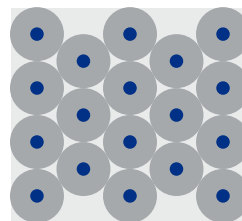
- A 20.25" (514 mm)
- B 8" (203 mm)
- C 13" (330 mm)

### BULK TUBE



15-20 lbs (6.80 kg)

- A 03.43" (87 mm)
- B 10" (254 mm)
- C 11" (279 mm)
- D 03.25" (83 mm)
- E 09.25" (235 mm)



#### Pallet Orientation

18 rolls per level  
54 rolls per pallet