

A. System Overview

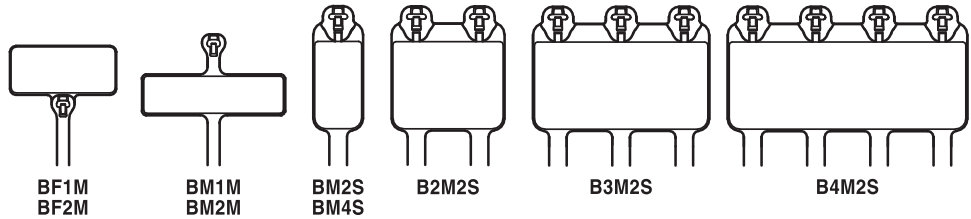
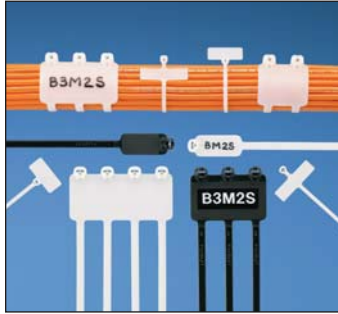
UL® US CS® Dome-Top® Barb Ty Marker and Flag Ties

- Natural nylon material for indoor use
- Weather resistant material has greater resistance to damage caused by ultraviolet light – indoor or outdoor use
- Used to fasten and identify bundles at the same time
- Stainless steel locking barb provides consistent performance, reliability, and infinite adjustability through entire bundle range
- Can be marked with Panduit marker pens on the previous page or computer printable labels
- Custom imprinting with text, symbols, or trademarks available using Panduit Custom Hot Stamping Service, see page B1.93
- Curved tip is easy to pick up from flat surfaces and allows faster initial threading to speed installation

B1. Cable Ties

B2. Cable Accessories

B3. Stainless Steel Ties



C1. Wiring Duct

C2. Surface Raceway

C3. Abrasion Protection

| Part Number | Marker Type | Length | | Width | | Thickness | | Marker Write-On Area | | Max. Bundle Dia. | | Min. Loop Tensile Str. | | Recommended Installation Tool | Std. Pkg. Qty. | Std. Ctn. Qty. |
|-------------|-------------|--------|----|-------|----|-----------|----|----------------------|----|------------------|----|------------------------|---|-------------------------------|----------------|----------------|
| | | In. | mm | In. | mm | In. | mm | In. | mm | In. | mm | Lbs. | N | | | |

C4. Cable Management

Nylon 6.6

Miniature Cross Section

| | | | | | | | | | | | | | | | | |
|---------------|------|-----|-----|------|-----|------|-----|------------|------------|------|----|----|----|----------------------------------|-----|------|
| BF1M-C | Flag | 4.6 | 117 | .095 | 2.4 | .046 | 1.2 | .36 x .81 | 9.1 x 20.6 | .90 | 23 | 18 | 80 | GTS, GTSL, GS2B, PTS, PPTS, STS2 | 100 | 1000 |
| BF2M-C | Flag | 8.3 | 211 | .095 | 2.4 | .046 | 1.2 | .36 x .81 | 9.1 x 20.6 | 2.00 | 51 | 18 | 80 | | 100 | 1000 |
| BM1M-C | Wrap | 4.2 | 107 | .095 | 2.4 | .046 | 1.2 | .29 x 1.09 | 7.4 x 27.7 | .90 | 23 | 18 | 80 | | 100 | 1000 |
| BM2M-C | Wrap | 7.9 | 201 | .095 | 2.4 | .046 | 1.2 | .29 x 1.09 | 7.4 x 27.7 | 2.00 | 51 | 18 | 80 | | 100 | 1000 |

D1. Terminals

Standard Cross Section

| | | | | | | | | | | | | | | | | |
|-----------------|------|------|-----|------|-----|------|-----|------------|-------------|------|-----|----|-----|--|-----|------|
| BM2S-C | Wrap | 8.0 | 203 | .185 | 4.7 | .045 | 1.2 | .49 x .91 | 12.4 x 23.1 | 2.00 | 51 | 50 | 222 | GTS, GTSL, GS2B, GTH, GS4H, PTS, PTH, PPTS, STS2, STH2 | 100 | 1000 |
| BM4S-C | Wrap | 15.1 | 384 | .185 | 4.7 | .052 | 1.3 | .50 x 2.13 | 12.7 x 54.1 | 4.00 | 102 | 50 | 222 | | 100 | 1000 |
| B2M2S-D | Wrap | 8.0 | 203 | .185 | 4.7 | .045 | 1.2 | 1.15 x .91 | 29.2 x 23.1 | 2.00 | 51 | 50 | 222 | | 500 | 2500 |
| B3M2S-TL | Wrap | 8.0 | 203 | .185 | 4.7 | .045 | 1.2 | 1.81 x .91 | 46.0 x 23.1 | 2.00 | 51 | 50 | 222 | | 250 | 2500 |
| B4M2S-TL | Wrap | 8.0 | 203 | .185 | 4.7 | .045 | 1.2 | 2.47 x .91 | 62.7 x 23.1 | 2.00 | 51 | 50 | 222 | | 250 | 2500 |

D2. Power Connectors

D3. Grounding Connectors

Weather Resistant Nylon 6.6

Miniature Cross Section

| | | | | | | | | | | | | | | | | |
|----------------|------|-----|-----|------|-----|------|-----|------------|------------|------|----|----|----|----------------------------------|------|-------|
| BF1M-M0 | Flag | 4.6 | 117 | .095 | 2.4 | .046 | 1.2 | .36 x .81 | 9.1 x 20.6 | .90 | 23 | 18 | 80 | GTS, GTSL, GS2B, PTS, PPTS, STS2 | 1000 | 25000 |
| BF2M-M0 | Flag | 8.3 | 211 | .095 | 2.4 | .046 | 1.2 | .36 x .81 | 9.1 x 20.6 | 2.00 | 51 | 18 | 80 | | 1000 | 25000 |
| BM1M-M0 | Wrap | 4.2 | 107 | .095 | 2.4 | .046 | 1.2 | .29 x 1.09 | 7.4 x 27.7 | .90 | 23 | 18 | 80 | | 1000 | 25000 |
| BM2M-M0 | Wrap | 7.9 | 201 | .095 | 2.4 | .046 | 1.2 | .29 x 1.09 | 7.4 x 27.7 | 2.00 | 51 | 18 | 80 | | 1000 | 25000 |

E1. Labeling Systems

E2. Labels

Standard Cross Section

| | | | | | | | | | | | | | | | | |
|------------------|------|------|-----|------|-----|------|-----|------------|-------------|------|-----|----|-----|--|-----|-------|
| BM2S-D0 | Wrap | 8.0 | 203 | .185 | 4.7 | .045 | 1.2 | .49 x .91 | 12.4 x 23.1 | 2.00 | 51 | 50 | 222 | GTS, GTSL, GS2B, GTH, GS4H, PTS, PTH, PPTS, STS2, STH2 | 500 | 10000 |
| BM4S-D0 | Wrap | 15.1 | 384 | .185 | 4.7 | .052 | 1.3 | .50 x 2.13 | 12.7 x 54.1 | 4.00 | 102 | 50 | 222 | | 500 | 5000 |
| B2M2S-D0 | Wrap | 8.0 | 203 | .185 | 4.7 | .045 | 1.2 | 1.15 x .91 | 29.2 x 23.1 | 2.00 | 51 | 50 | 222 | | 500 | 2500 |
| B3M2S-TL0 | Wrap | 8.0 | 203 | .185 | 4.7 | .045 | 1.2 | 1.81 x .91 | 46.0 x 23.1 | 2.00 | 51 | 50 | 222 | | 250 | 2500 |
| B4M2S-TL0 | Wrap | 8.0 | 203 | .185 | 4.7 | .045 | 1.2 | 2.47 x .91 | 62.7 x 23.1 | 2.00 | 51 | 50 | 222 | | 250 | 2500 |

E3. Pre-Printed & Write-On Markers

E4. Permanent Identification

E5. Lockout/Tagout & Safety Solutions

F. Index